

**Mandatory Student Fee Committee Meeting Minutes**  
**Perimeter: Clarkston Campus**  
**Jim Cherry LRC 4190**  
**2:10 to 2:33 p.m.**  
**October 11, 2019**

**PRESENT:** Allison Calhoun-Brown, Chris Goode, Ashrakat Hassan, Timber Hines, Beth Jones, Amy Jurgens, Doug Justice, Jill Lee-Barber, Hadejia Manais, Lenore Musick, Joyce Presswood, Shantavia Reid-Stroud, Wolfgang Schloer, Cassie Turner and Ariday Walkes

**ABSENT:** Mohamad Alo, Coletta Carter, Chip Hill, Janii McIver, Jazmin Mejia, Ali Pirani, Chase Ritterbusch and Aprille Williams

**OPENING:**

Dr. Allison Calhoun-Brown opened the meeting at 2:10 p.m. Hadejia Manais is the co-chair of the Mandatory Student Fee Committee at Perimeter Campus. A brief background of the committee was given. The Board of Regents policy requires an annual review of all student fees. The function of this committee is to review and make a recommendation. This is the 11<sup>th</sup> year in a row we anticipate no increases for student fees. We also have no proposals for the reallocation of student fees.

**INTRODUCTIONS:**

Everyone introduced themselves and stated the administrative unit they represented.

**HANDOUTS:**

*Mandatory Student Fee Committee Membership List – Perimeter Campus for Faculty/Staff and Students.* This list is shared with members only due to confidential contact info. This committee consists of representatives from each of the units that administers a student fee and a corresponding number of students, who must make up 50% of the voting members, which means that some administrators may need to refrain from voting.

*Mandatory Student Fee Committee – Perimeter Organizational Chart.* (Attachment 1)  
Consist of all the units with fees.

*Mandatory Student Fee Hierarchy for Recommendations/Approvals* (Attachment 2)  
After this committee makes a recommendation, Dr. Calhoun-Brown will represent the fee at the Fiscal Advisory Committee to the President (FAC-P).

**Additional Handouts Sent Via Email**

*Mandatory Student Fee Committee Membership & Procedures – Perimeter* (Attachment 3)  
*University System of Georgia – Mandatory Fee Rates Per Semester – FY 2020* (Attachment 4)

**OVERVIEW OF MANDATORY STUDENT FEES:**

*Facts on Student Fees at Georgia State University – Perimeter College* (Attachment 5)  
The committee reviewed the handout describing each student fee. It includes a pie chart representing the total fees of \$340.00. All fees were open for questions.

### Discussion Included

The committee had a discussion on how the Perimeter student Health Fee is allocated.

The committee had a discussion on the Recreation Center Fee.

The committee had a discussion on the Student Center Fee.

The committee had a discussion on the Education International Fee.

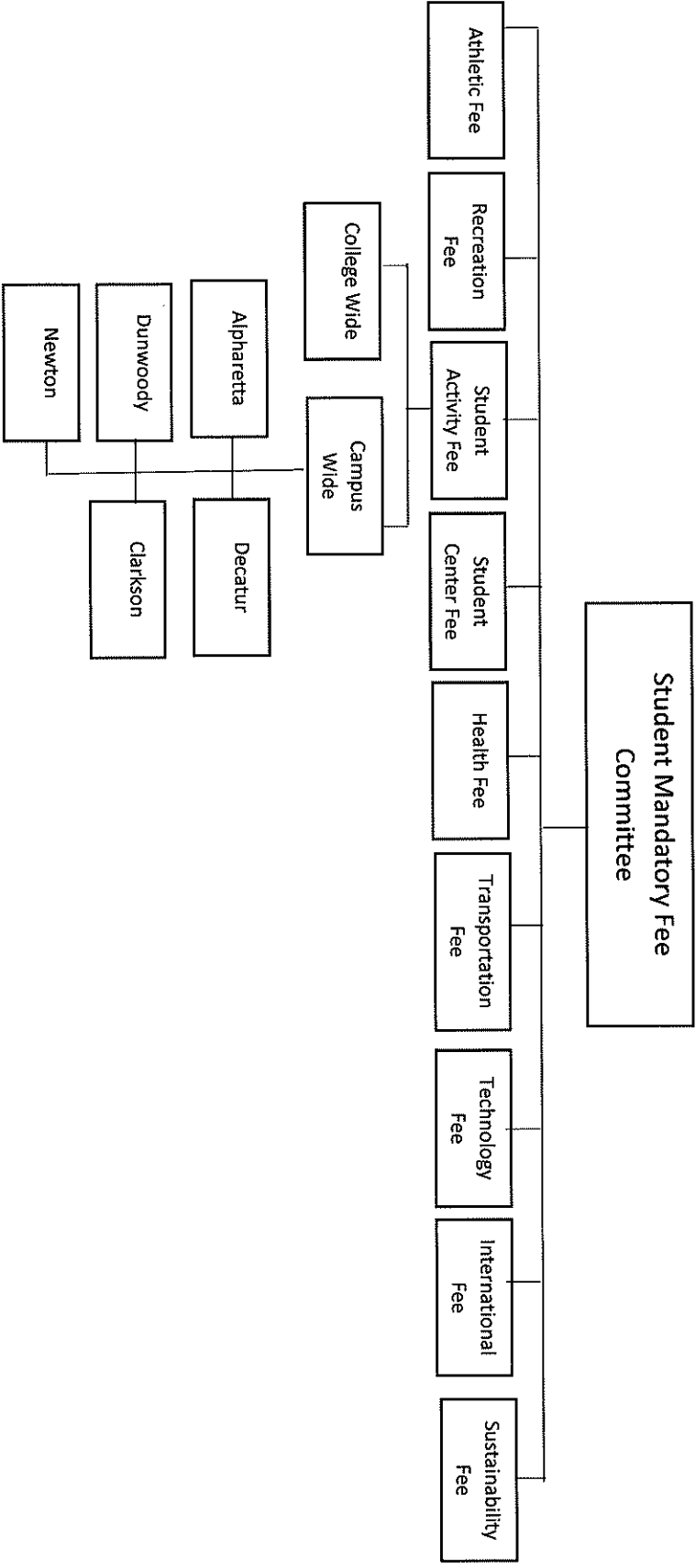
The committee had a discussion on the Sustainability Fee.

The committee had a discussion on the Athletic Fee.

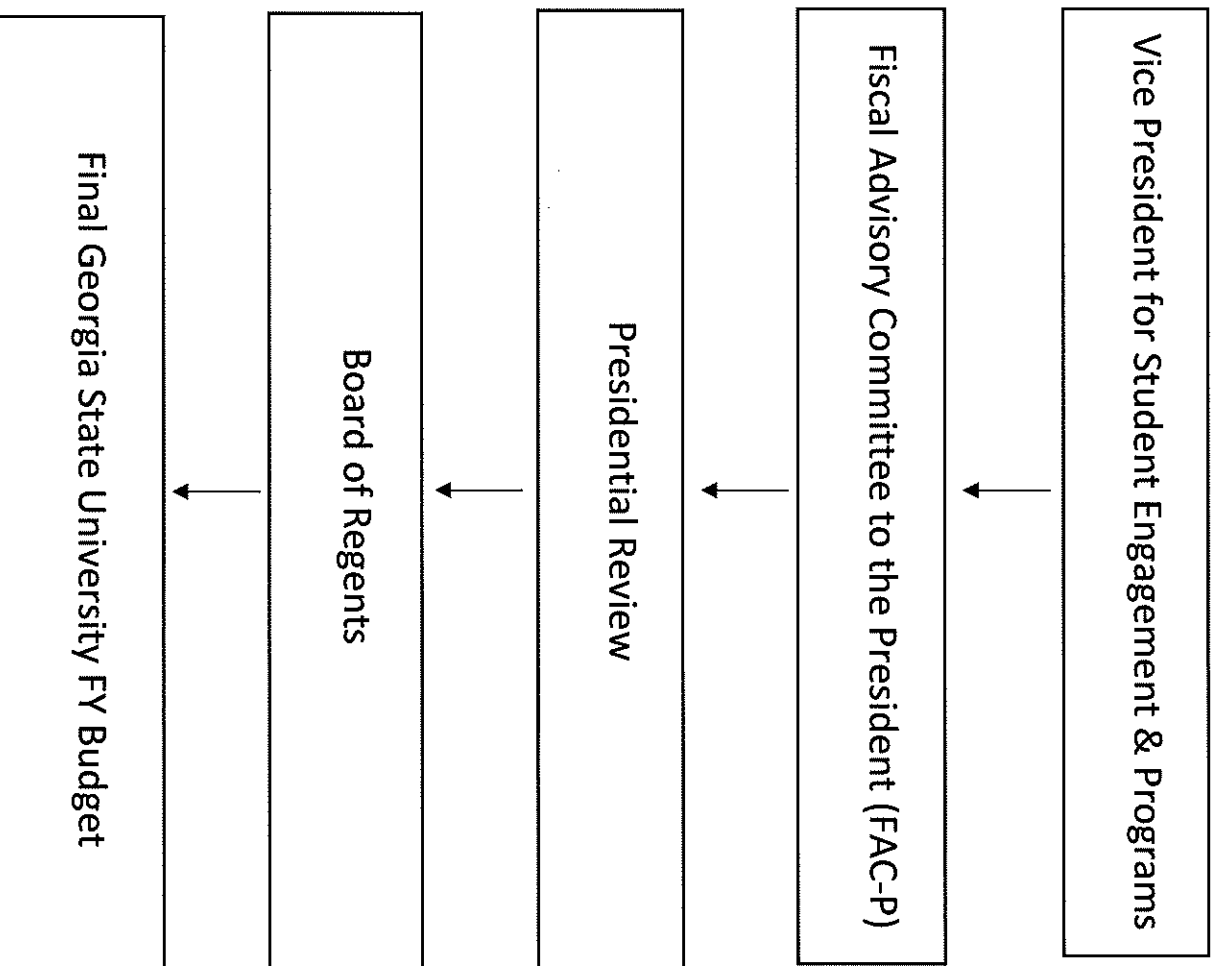
### **MOTION AND VOTING RESULTS:**

- There is no money to distribute. We have not received any new proposals or proposals for changes from the administrative units.
- **MOTION:** Chris Goode motioned for the recommendation of the fees to be maintained at the allocation of last years.
- Jill Lee-Barber seconded.
- After a headcount, there were three students eligible to vote. Three faculty/staff were selected to participate to make the numbers even.
- Roll call was taken to vote.
- The voting participants are as follows:
  - Students:
    - Ashrakat Hassan
    - Hadejia Manais
    - Cassie Turner
  - Staff/Faculty:
    - Amy Jurgens
    - Doug Justice
    - Wolfgang Schloer
- The breakdown of the vote is as follows:
  - 6 voted Yes (3 students and 3 staff/faculty)
- The meeting adjourned approximately 2:33 p.m.

Mandatory Student Fee Committee-  
Perimeter College  
Organizational Chart



# Mandatory Student Fee Hierarchy for Recommendations/Approvals



# **Mandatory Student Fee Committee Membership & Procedures Perimeter Campus**

## **Membership:**

The Perimeter College Mandatory Student Fee Committee shall consist of the following: the Vice-President for Student Engagement and Programs, the Associate Dean of Students, one of the Perimeter College Executive Vice Presidents of the Student Government Association (SGA), one representative from each unit that administers the student fee, and a number of student members so that the committee is 50% students. A representative from the Provost office and the office of Budget and Planning shall serve as ex-officio members of the committee.

## **Procedures:**

The Vice-President for Student Engagement and Programs shall serve as the chair of the committee and thus convenes the committee and presides over meetings but does not vote. The SGA President appoints one of the Perimeter College Executive Vice Presidents to serve as Vice-Chair. Tie votes are treated as failed-to-pass. Quorum for all votes shall consist of at least an equal number of students to other members.

Non-student representatives shall be appointed by their respective unit. The SGA President shall appoint five voting student representatives (one from each campus) and two alternates to the committee who only vote in case a voting member is absent. Vacancies on the committee shall be filled by the Chair and Vice-chair. Student vacancies shall be filled by the SGA President, the Vice-President for Student Engagement and Programs shall fill all other vacancies.

## **Process:**

Each group that oversees the allocation of student fees must submit proposals for the creation of new fees or fee increases to the committee at least one month prior to the Fiscal Advisory Committee to the President's (FAC-P) student fee hearings. The Student Fee Committee will review the proposals and forward its recommendations to FAC-P, the President and the Central Office of the University System of Georgia.

**APPENDIX IIIA  
BOARD OF REGENTS  
UNIVERSITY SYSTEM OF GEORGIA  
MANDATORY FEE RATES PER SEMESTER - FISCAL YEAR 2020  
EFFECTIVE FALL SEMESTER**

	<b>APPROVED RATE FALL 2018</b>	<b>RECOMMENDED RATE FALL 2019</b>
<b>Augusta University</b>		
Activity	47	47
Athletic	175	175
Health	140	140
Special Institutional Fee (Health Sciences Campus)*	450	450
Student Center-Facility	43	43
Technology	110	110
Transportation	50	50
Wellness	40	50
	<hr/>	<hr/>
	\$1,055	\$1,065
*Special Institutional Fee (Summerville Campus)	\$355	\$355
<b>Georgia Institute of Technology</b>		
Activity	40	40
Athletic	127	127
CRC Operations Fee	51	51
Health	168	172
Recreation	54	54
Special Institutional Fee – Undergraduate Students**	544	544
Student Center Operations	32	32
Technology	107	107
Transportation	85	85
	<hr/>	<hr/>
	\$1,208	\$1,212
** Special Institutional Fee for Graduate Students Only	\$344	\$344

**APPENDIX IIIA  
BOARD OF REGENTS  
UNIVERSITY SYSTEM OF GEORGIA  
MANDATORY FEE RATES PER SEMESTER - FISCAL YEAR 2020  
EFFECTIVE FALL SEMESTER**

	<b>APPROVED RATE FALL 2018</b>	<b>RECOMMENDED RATE FALL 2019</b>
<b>Georgia State University</b>		
Activity	85	85
Athletic	275	275
Health	40	40
International	21	21
Library Fee	5	5
Library Facility Fee	13	13
Recreation Fee	38	38
Special Institutional Fee	404	404
Student Center-Facility	36	36
Sustainability Fee	5	5
Technology	85	85
Transportation	57	57
	<hr/> \$1,064	<hr/> \$1,064
<b>Georgia State University – Perimeter College</b>		
Activity	47	47
Athletic	38	38
Health Services	27	27
International	3	3
Recreation-Facility	3	3
Special Institutional Fee	200	200
Student Center-Facility	168	168
Sustainability Fee	2	2
Technology	50	50
Transportation	2	2
	<hr/> \$540	<hr/> \$540

**APPENDIX IIIA  
BOARD OF REGENTS  
UNIVERSITY SYSTEM OF GEORGIA  
MANDATORY FEE RATES PER SEMESTER - FISCAL YEAR 2020  
EFFECTIVE FALL SEMESTER**

	<b>APPROVED RATE FALL 2018</b>	<b>RECOMMENDED RATE FALL 2019</b>
<b>University of Georgia</b>		
Activity	78	78
Athletic	53	53
Connect UGA Fee	30	30
Green Fee	3	3
Health	203	206
Recreation	15	15
Special Institutional Fee	450	450
Student Center-Facility	75	75
Technology	114	114
Transportation	118	121
	<hr/> \$1,139	<hr/> \$1,145
<b>Georgia Southern University</b>		
Activity	101	101
Athletic	214	214
Athletic Facility Fee	40	40
Health	94	94
Recreation	42	42
Recreation Activity Center	100	100
Special Institutional Fee	290	290
Sustainability Fee	10	10
Technology	100	100
Transit	55	55
	<hr/> \$1,046	<hr/> \$1,046
<b>Georgia Southern University – Armstrong Campus</b>		
Activity	49	49
Athletic	90	90
Health	20	20
Recreation	45	45
Student Center-Facility	110	110
Special Institutional Fee	113	113
Technology	100	100
	<hr/> \$527	<hr/> \$527



**APPENDIX IIIA  
BOARD OF REGENTS  
UNIVERSITY SYSTEM OF GEORGIA  
MANDATORY FEE RATES PER SEMESTER - FISCAL YEAR 2020  
EFFECTIVE FALL SEMESTER**

	<b>APPROVED RATE FALL 2018</b>	<b>RECOMMENDED RATE FALL 2019</b>
<b>Kennesaw State University</b>		
Activity	39	39
Athletic	221	221
Health	51	51
International	11	6
Parking	93	93
Recreation Center	97	97
Special Institutional Fee	300	300
Sports & Recreation Parks Fee	75	80
Technology	55	55
Transportation	58	58
Wellness	3	3
	<hr/> \$1,003	<hr/> \$1,003
<b>University of West Georgia</b>		
Activity	59	59
Athletic	195	195
Athletic Complex	105	105
Facility Fee	126	126
Health	101	101
International	5	5
Special Institutional Fee	290	290
Technology	55	55
Transportation	76	76
	<hr/> \$1,012	<hr/> \$1,012

**APPENDIX IIIA  
BOARD OF REGENTS  
UNIVERSITY SYSTEM OF GEORGIA  
MANDATORY FEE RATES PER SEMESTER - FISCAL YEAR 2020  
EFFECTIVE FALL SEMESTER**

	<b>APPROVED RATE FALL 2018</b>	<b>RECOMMENDED RATE FALL 2019</b>
<b>Valdosta State University</b>		
Access Card	10	10
Activity	37	37
Athletic	146	146
Athletic Fieldhouse Fee	29	32
Health	98	98
Health Facility	52	52
Parking Deck Facilities	118	138
Recreation	80	80
Special Institutional Fee	295	295
Student Center	91	101
Student Union Operating Fee	17	17
Technology	65	65
Transportation	35	35
	<b>\$1,073</b>	<b>\$1,106</b>
<b>Albany State University</b>		
Access Card	10	10
Activity	85	85
Athletic	145	170
Health	40	50
Special Institutional Fee	225	225
Student Center-Facility	280	280
Technology	65	65
Transportation	35	50
	<b>\$885</b>	<b>\$935</b>

**APPENDIX IIIA  
BOARD OF REGENTS  
UNIVERSITY SYSTEM OF GEORGIA  
MANDATORY FEE RATES PER SEMESTER - FISCAL YEAR 2020  
EFFECTIVE FALL SEMESTER**

	<b>APPROVED RATE FALL 2018</b>	<b>RECOMMENDED RATE FALL 2019</b>
<b>Clayton State University</b>		
Access Card	20	20
Activity	60	60
Athletic	170	170
Health	46	46
Parking	34	34
Special Institutional Fee	250	250
Student Center-Facility	100	100
Technology	57	57
	<hr/> \$737	<hr/> \$737
<b>Columbus State University</b>		
Activity	67	67
Athletic	200	200
Health	53	53
International	14	14
Parking Deck	47	47
Recreation-Facility	180	180
Special Institutional Fee	265	265
Technology	79	79
Transportation	30	30
	<hr/> \$935	<hr/> \$935
<b>Fort Valley State University</b>		
Activity	71	71
Athletic	220	220
Health	73	73
Special Institutional Fee	250	250
Student Center-Facility	150	180
Technology	70	70
Transportation	20	20
	<hr/> \$854	<hr/> \$884

**APPENDIX IIIA  
BOARD OF REGENTS  
UNIVERSITY SYSTEM OF GEORGIA  
MANDATORY FEE RATES PER SEMESTER - FISCAL YEAR 2020  
EFFECTIVE FALL SEMESTER**

	<b>APPROVED RATE FALL 2018</b>	<b>RECOMMENDED RATE FALL 2019</b>
<b>Georgia College &amp; State University</b>		
Access Card (BobCat)	9	9
Activity	133	133
Athletic	181	181
Health	95	95
Special Institutional Fee	275	275
Technology	68	68
Transportation/Parking	75	75
Wellness Center	175	175
	<hr/> \$1,011	<hr/> \$1,011
<b>Georgia Southwestern State University</b>		
Activity	65	65
Athletic	205	215
Health	80	80
Special Institutional Fee	242	242
Success Center	38	38
Technology	60	60
Transportation	18	18
	<hr/> \$708	<hr/> \$718
<b>Middle Georgia State University</b>		
Activity	45	45
Athletic	130	130
Health	20	20
Parking	10	10
Recreation (Macon Campus only)*	140	165
Special Institutional Fee	250	250
Technology	46	46
	<hr/> \$641	<hr/> \$666
*Recreation (Warner Robins Campus)	\$40	\$45

**APPENDIX IIIA  
BOARD OF REGENTS  
UNIVERSITY SYSTEM OF GEORGIA  
MANDATORY FEE RATES PER SEMESTER - FISCAL YEAR 2020  
EFFECTIVE FALL SEMESTER**

	<b>APPROVED RATE FALL 2018</b>	<b>RECOMMENDED RATE FALL 2019</b>
<b>Savannah State University</b>		
Activity	55	55
Athletic	300	300
Health	67	67
Special Institutional Fee	202	202
Student Center and Stadium Facility	200	200
Technology	50	50
Transportation	45	45
	<hr/> \$919	<hr/> \$919
<b>University of North Georgia - Dahlonega</b>		
Activity	65	65
Athletic	200	200
Health*	70	65
Recreation Center	83	83
Special Institutional Fee	225	225
Technology	75	75
Transportation	220	220
	<hr/> \$938	<hr/> \$933
*Fee reduced to \$65 beginning Spring 2020. Remains \$70 for Fall 2019		
<b>University of North Georgia - Gainesville, Oconee, Cumming, Blue Ridge</b>		
Activity	42	42
Health (Gainesville only)*		65
Special Institutional Fee	225	225
Technology	75	75
Transportation**	85	85
	<hr/> \$427	<hr/> \$492

\*Begins Spring 2020

\*\*Not assessed on Blue Ridge campus

**APPENDIX IIIA  
BOARD OF REGENTS  
UNIVERSITY SYSTEM OF GEORGIA  
MANDATORY FEE RATES PER SEMESTER - FISCAL YEAR 2020  
EFFECTIVE FALL SEMESTER**

	<b>APPROVED RATE FALL 2018</b>	<b>RECOMMENDED RATE FALL 2019</b>
<b>Abraham Baldwin Agricultural College</b>		
Access Card	20	20
Activity	50	50
Athletic*	88	88
Health*	63	63
Special Institutional Fee	200	200
Technology	50	50
Transportation	30	30
	<hr/> \$501	<hr/> \$501
* Not assessed on Bainbridge, Blakely, and Donalsonville campuses		
<b>Atlanta Metropolitan State College</b>		
Activity	60	60
Athletic	65	0
Special Institutional Fee	200	200
Student Center Fee	160	240
Technology	40	40
	<hr/> \$525	<hr/> \$540
<b>College of Coastal Georgia</b>		
Access Card	15	15
Activity	60	60
Athletic	175	175
Campus Center	125	125
Recreation & Intramural	25	25
Special Institutional Fee	225	225
Technology	60	60
	<hr/> \$685	<hr/> \$685

**APPENDIX IIIA  
BOARD OF REGENTS  
UNIVERSITY SYSTEM OF GEORGIA  
MANDATORY FEE RATES PER SEMESTER - FISCAL YEAR 2020  
EFFECTIVE FALL SEMESTER**

	<b>APPROVED RATE FALL 2018</b>	<b>RECOMMENDED RATE FALL 2019</b>
<b>Dalton State College</b>		
Access Card	20	20
Activity	40	40
Athletic	117	117
Health Center	30	30
Parking Deck	65	65
Recreation	20	20
Special Institutional Fee	200	200
Technology	48	48
Transportation	20	20
	<b>\$560</b>	<b>\$560</b>
<b>East Georgia State College</b>		
Access Card	15	0
Activity	33	33
Athletic	100	100
Health	30	30
Parking	15	15
Special Institutional Fee	200	200
Technology	50	50
Transportation	75	75
	<b>\$518</b>	<b>\$503</b>
<b>Georgia Gwinnett College</b>		
Activity	55	55
Athletic	160	160
Health	25	40
Health & Wellness	70	70
Infrastructure Support Fee	35	35
International	7	7
Parking	100	100
Special Institutional Fee	245	245
Student Center	115	115
Technology	40	40
	<b>\$852</b>	<b>\$867</b>

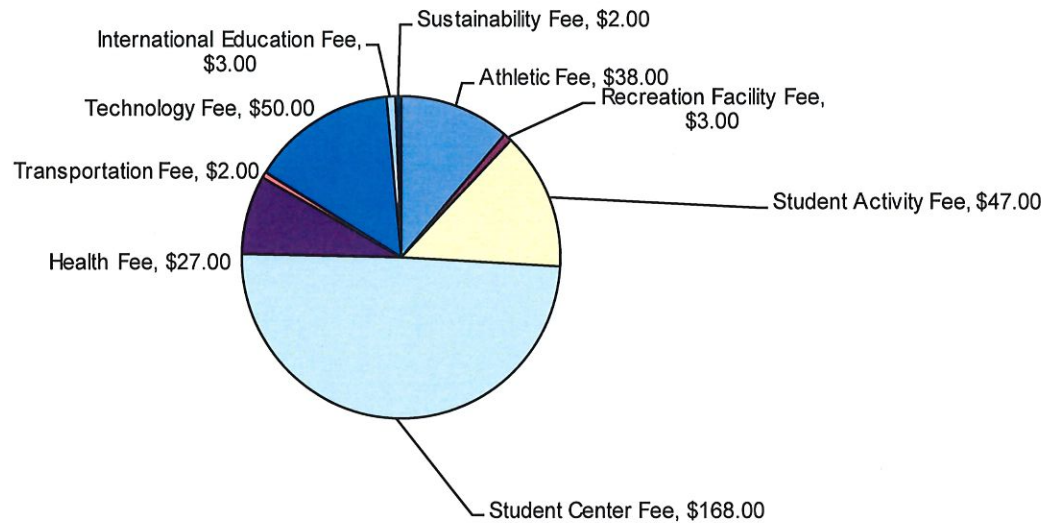
**APPENDIX IIIA  
BOARD OF REGENTS  
UNIVERSITY SYSTEM OF GEORGIA  
MANDATORY FEE RATES PER SEMESTER - FISCAL YEAR 2020  
EFFECTIVE FALL SEMESTER**

	<b>APPROVED RATE FALL 2018</b>	<b>RECOMMENDED RATE FALL 2019</b>
<b>Georgia Highlands College</b>		
Access Card	17	17
Activity	40	40
Athletic	85	85
Special Institutional Fee	200	200
Student Support Services Fee	130	130
Technology	50	50
Transportation	10	10
	<hr/> \$532	<hr/> \$532
<b>Gordon State College</b>		
Activity	54	54
Athletic	85	85
Health	20	20
Special Institutional Fee	200	200
Student Recreation Center	162	192
Technology	52	52
Transportation	10	10
	<hr/> \$583	<hr/> \$613
<b>South Georgia State College</b>		
Access Card	15	15
Activity	55	55
Athletic	115	115
Parking/Campus Access	10	10
Records	10	10
Special Institutional Fee	170	170
Student Center-Facility	55	55
Technology	85	85
	<hr/> \$515	<hr/> \$515



***DIVISION OF STUDENT SUCCESS***

FISCAL YEAR 2020

**FACTS ON STUDENT FEES AT GEORGIA STATE UNIVERSITY****2019-2020 Mandatory Fees - Perimeter College**

Each of the student fees are used for vastly different purposes. The overriding philosophy regarding fees is to provide a comprehensive offering of quality programs and services to Georgia State University students outside the classroom.

- **The Student Activity Fee is distributed by the Campus-Wide and College-Wide fee committees and is allocated to over 100 chartered student organizations on the Perimeter campuses.** These funds support a variety of programs and services on all Perimeter campuses, including the Panther Activities Council, civic engagement programs, recreational services and programs, diversity programs, leadership programs, workshops, etc. In addition, various student organizations are supported whose activities are related to their specific degree program.
- **The Athletic Fee** provides Georgia State students from all GSU campuses access to any athletic event or competition.
- **The Transportation Fee** provides for a significant discount on the purchase of the UPass Breeze cards.
- **The Health Fee** funds several areas of health and psychological wellness for Georgia State University students: (1) Health Clinics (Clarkston, Dunwoody, and Mobile Clinic); (2) Student Health Promotion; and (3) Counseling Services. Students may visit the GSU Health Clinics to receive ongoing medical consultations and receive prescriptions via appointments or through the urgent sick visit process. The Mobile Clinic visits all campuses and provides a range of services such as free HIV and STI testing, health screenings, nutrition consults, and vaccinations. Dates for the mobile clinic at each campus can be found at [health.gsu.edu](http://health.gsu.edu). Nutrition consultation is available at Clarkston and Dunwoody clinics as well as by telehealth. Counseling Services are provided on all campuses; additionally, all students have access to the after-hours crisis line and can speak with a licensed counselor 24/7. Student Health Promotion supports activities that empower Georgia State University students to make informed healthier choices and achieve academic success; monthly programming on a range of health-related topics is provided monthly on all campuses free of charge.

- **The Student Recreation Center Fee** provides Perimeter students access to any campus recreational facility (Student Recreation Center, Panthersville Intramural Fields, Indian Creek Recreation Area, Clarkston, Decatur, Dunwoody, Decatur, Newton). The fee subsidizes programming, operations, and services at each of the campuses for recreation use. The fee assists with updating and maintenance of the fitness equipment at Newton, Decatur, Clarkston, and Dunwoody campuses and subsidizes the Workout Anytime Fitness passes at the Alpharetta campus. The fee allows the department to offer programs and services for either no additional fee or a minimal additional fee. This fee assists with subsidizing staff to supervise the recreation areas and provide programming.
- **The Student Center Fee** supports the following Student Services projects: International Center (Clarkston campus), Student Success Center (Clarkston campus), Student Center (Dunwoody campus), Student Success Center (Decatur campus), Student Learning Center (Newton campus), and parking decks (Dunwoody and Newton campuses).
- **The Educational International Fee** is used for student workers in support of the Perimeter College Study Aboard Faculty Associate, student abroad outreach/recruitment events, and for the ISSS International Student Orientation and check-in at Perimeter College. Last academic year, 54 Perimeter students received a total of \$75,000 in scholarship.
- **The Technology Fee** funds several initiatives that benefit Perimeter students in meeting the educational objectives of their academic program by providing access to computers, software, and other services. Including the following proposals that were awarded by the Institutional Mandate fund, classroom and lab refresh, PC technology education programs, PC software license renewals, classroom and lab support, Print Grant. Also, the following proposals were awarded through the competitive process, Multipurpose 3D Contour and Geomorphology Visualization Tool, iPad upgrades for BIOL 2120 from IPad2, calculators and chrome books for library circulation, iPad Art Innovators, and Nursing Lab Alaris Simulation IV Pumps.
- **The Sustainability Fee** supports the expansion of Georgia State University's recycling program to all perimeter campuses as well as educational programs during Earth Month.
- **Tuition is used to cover the academic costs of your education.** It is used in combination with state appropriations and donations to fund classroom instruction, academic facilities and faculty/staff salaries. Unfortunately, costs do rise. However, GSU's tuition continues to be lower than most large southeastern universities, and the percentage of increase has been kept lower than many similar institutions.

Clearly, in order to keep fees reasonable, many students subsidize services that they do not use. It is the intention of the university that the comprehensiveness of the services and programs provided will offer something for everyone.

Fee amount and percentage of total fee:

Athletic Fee	\$38.00	11.18%
Recreation Facility Fee	\$3.00	0.88%
Student Activity Fee	\$47.00	13.82%
Student Center Fee	\$168.00	49.41%
Health Fee	\$27.00	7.94%
Transportation Fee	\$2.00	0.59%
Technology Fee	\$50.00	14.71%
International Education Fee	\$3.00	0.88%
Sustainability Fee	\$2.00	.59%
	<hr/>	
	\$340.00	100%